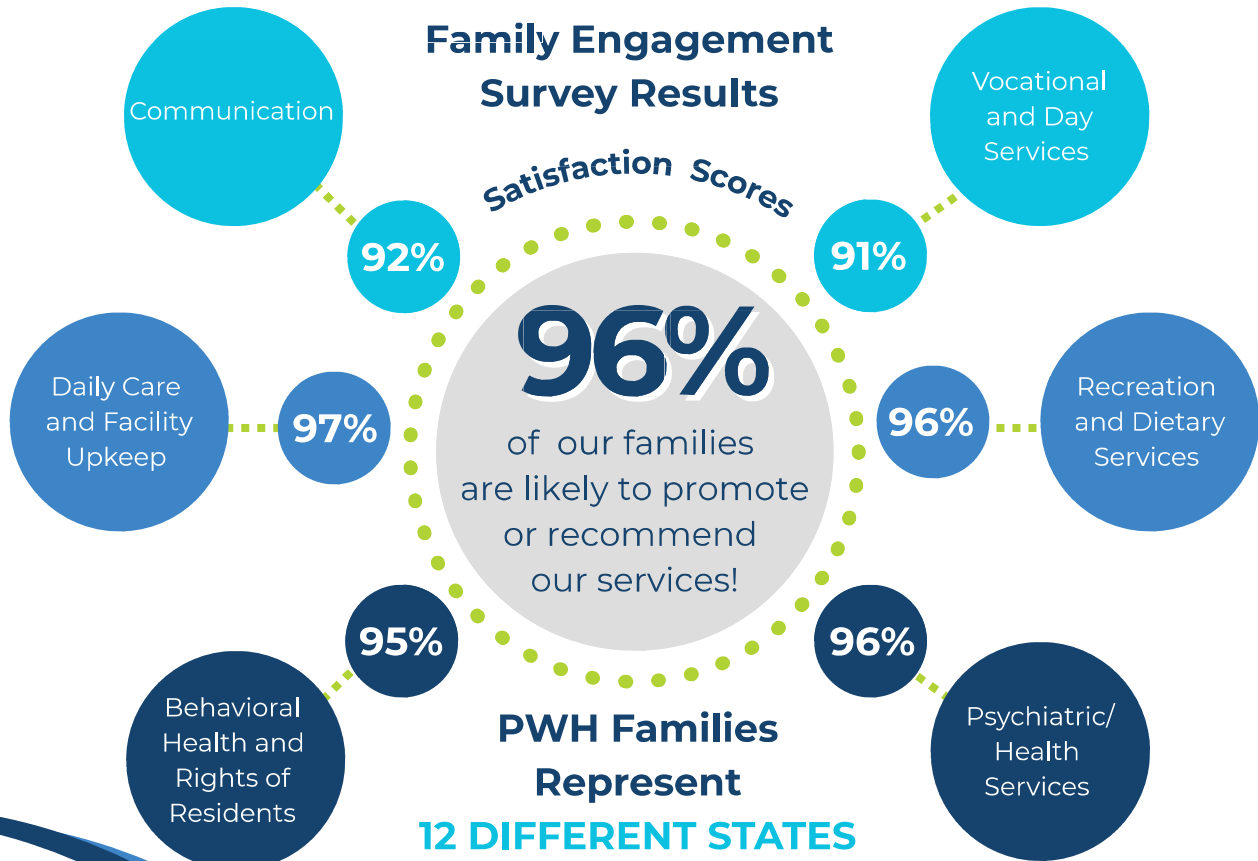




## 2024 Family Engagement Survey Results



## 2025 Strategic Priorities

- **New Services:**  
Exploring new housing for young adults (18–21) and specialized care for aging individuals with PWS.
- **Aging Resource Guide:**  
Create a best practices guide for aging people with PWS based on organizational expertise.
- **Research & Advocacy:**  
Expand research and advocacy efforts to remain a leader in the PWS community.

## 2024 Highlights

### *Health and Wellness*



- Collectively, PWH residents lost 835 lbs.
- 65% of PWH are currently meeting all weight goals.



### *Audits & Recognitions*

- PWH completed 33 audits with a 97% average compliance score.
- One home achieved a perfect 100% rating!
- Results reflect strong operations and commitment to quality standards.